



Since 1996

ALSTON INC.

Quality . Beauty . Longevity .™

ALSTON Luxury Vinyl Plank and Luxury Vinyl Tile including StoneCoreX® SPC/WPC Flooring

INSTALLATION INSTRUCTIONS

CAREFULLY READ OVER THE ENTIRE INSTRUCTIONS BEFORE PROCEEDING WITH ACTUAL INSTALLATION. IF YOU DO NOT ACCEPT THE TERMS AND CONDITIONS OF THIS WARRANTY, PLEASE DO NOT INSTALL OUR FLOORING.

(Please check for details on our website www.AlstonFlooring.com for up-to-date information and changes)

Pre-Installation Satisfaction Guarantee

ALSTON has adopted the highest possible manufacturing standards for its premium floors well within the limitations of the natural materials, and, based on the accepted standards in the industry defect tolerances and variances of maximum 5% allowed. These allowances cover either natural defect within the raw-materials themselves, and/or defects that may take place in working specifically with natural materials.

Within 30 days of purchase, **PRIOR TO INSTALLATION**, the Installer/Owner should perform a detailed product quality inspection. The User/Installer/Homeowner has the final responsibility pertaining to the inspection and acceptance of quality, grade, workmanship, surface-finish, color, and visual aspects of ALSTON's floorings prior to installation. The responsibility is also applicable during his/her/their absence from the location of the installation(s). The installer must also utilize the product selectively and methodically. Floor material must be carefully checked and judged prior to installation; **never install any damaged or visually defective boards**. If for any reason the flooring is not acceptable at the time of final inspection, **please DO NOT install the flooring** and contact the seller or ALSTON immediately and we will exchange the material until you are 100% satisfied. However, once any boards are installed, even with defects, they are deemed as accepted by the User/Installer/Homeowner.

Installation General Guidelines

Our Vinyl flooring products are recommended as a floating floor which should never be nailed down to the substrate. It can be glued to the subfloor if desired but we recommend to remove the foam padding to ensure proper adhesion to the substrate. Vinyl flooring should NEVER be installed under cabinets or kitchen islands. Doing so will void the manufacture warranty. Vinyl flooring should be laid flat and fully supported during shipping and storage. It should be stored away from direct sunlight and installed in a climate controlled indoors locations with average temperature between **55°F (13°C) -- 85°F (29°C)**. It can be installed Above Grade, On Grade or Below Grade. Post Installation indoor temperature range need to be between **32°F (0°C) -- 100°F (37.7°C)**. Use of drapes/blinds is recommended during peak sunlight exposure hours.

Suitable Surfaces

It is essential for ALL substrate to be flat and smooth and MUST be within 1/8" in 6 feet or 3/16" in 10 feet. Failure to properly level the substrate will likely cause permanent damages to the flooring materials.

All surfaces must be clean and dust free. Lightly textured or porous surfaces. Well-bonded, solid floors. Dry, clean, well-cured concrete (cured for at least 60 days prior). Suitable surfaces include concrete, wood floors; CDX Underlayment Grade Plywood (minimum of 5/8" thickness); Underlayment Grade Particleboard; OSB (minimum 3/4" or 23/32" thickness); Ceramic or porcelain tiles with grout lines need to be filled with floor leveler that exceed the compressive strength of 3,000 psi.

Unsuitable Surfaces

Rough, uneven surfaces including carpet and underlay. Rough, heavily textured and/or uneven surfaces may telegraph through the vinyl and distort the finished surface. Do not install this product in areas which are exposed to long term direct sunlight such as sun rooms or solariums.

ALSTON INCORPORATED

21491 Ferrero Parkway • City of Industry, CA 91789 • U.S.A. • Tel (909) 287-0668 • www.AlstonFlooring.com
www.AlstonInc.com



Since 1996

ALSTON INC.

Quality . Beauty . Longevity .™

WARNING: DO NOT REMOVE OLD RESILIENT FLOORING. THESE PRODUCTS MAY CONTAIN EITHER ASBESTOS FIBERS OR CRYSTALLINE SILICA, WHICH CAN BE HARMFUL TO YOUR HEALTH. Please note that INSTALLATIONS OVER EXISTING RESILIENT FLOORING MAY BE MORE SUSCEPTIBLE TO INDENTATION. Regulations may require that the existing material be tested to determine asbestos content and may govern the removal and disposal of material. See current edition of the Resilient Floor Covering Institute (RFCI) publication Recommended Work Practices for Removal of Resilient Floor Coverings for detailed information and instructions on removing all resilient covering structures. For current information go to www.rfci.com

Radiant Heated Floors

Our LVT/LVP/SPC/WPC products are recommended only over hydronic radiant heated system. It is important that substrate and floor surface temperature must never exceed **85°F (29°C)**.

PREPARATION

The vinyl planks are recommended to acclimatize to room temperature (approx. 20°C/68°F) for a minimum of 72 hours prior to installation. Carefully check planks for any defects before installation. Remove any traces of glue or residue from the previous flooring surfaces.

Using floor-leveling compound if sub-floor is uneven (Over 1/8" in 6 feet or 3/16" in 10 feet). If installing over existing tile, use a floor levelling compound exceed the compressive strength of 3,000 psi to skim coat grout lines. Make sure the floor is smooth, clean, and free of wax, grease, oil or dust, and sealed as necessary before laying LVT/LVP/SPC/WPC.

****Moisture Barrier/Mitigator***

For a successful installation on all types of substrates, a moisture barrier/mitigator like 6 mil poly film or equal vapor retarder with a perm rating of 0.1 or less is required to be used as an additional layer of moisture protection to prevent the flooring material from being damaged by (moisture) vapor from the subfloor.

Regarding Cabinets and Kitchen Islands

Vinyl flooring should NEVER be installed under cabinets or kitchen islands. Doing so will void the manufacturer warranty.

Additional Underlayment

A second underlayment is allowed under any currently sold resilient product with attached underlayment in a residential application. If installed over a second underlayment, this underlayment cannot be greater than 3 mm thick.

Note: IIC (ASTM E492-09) and STC (ASTM E90-09) lab testing on certain resilient products tested with and without a second layer of underlayment, to date, does not indicate that a second underlayment will provide additional acoustic benefit.

For Concrete Substrates:

CONCRETE NEEDS TO DRY OUT FOR AT LEAST 60 DAYS PRIOR TO INSTALLATION. SUBFLOORS SHOULD MEET THE GUIDELINES OF THE LATEST EDITION OF ACI 302 AND ASTM F710, "STANDARD PRACTICE FOR PREPARING CONCRETE FLOORS TO RECEIVE RESILIENT FLOORING" AVAILABLE FROM THE AMERICAN SOCIETY FOR TESTING AND MATERIALS, 100 BARR HARBOR DRIVE, WEST CONSHOHOCKEN, PA 19428; 610-832-9585; <http://WWW.ASTM.ORG>.

All concrete substrates should be level within 1/8" in 6 feet or 3/16" in 10 feet and should be tested for IRH (Internal Relative Humidity) according to ASTM F-2170. In addition, Calcium Chloride tests may be conducted in addition to IRH and must be performed per the latest edition of ASTM-F1869. Floor should be tested per the latest edition of ASTM-F710 regarding PH level. PH reading of the concrete must not fall below 5.0 and not to exceed 9.0. Overall values of FF 36/ FL 20 may be appropriate for

ALSTON INCORPORATED

21491 Ferrero Parkway • City of Industry, CA 91789 • U.S.A. • Tel (909) 287-0668 • www.AlstonFlooring.com
www.AlstonInc.com



Since 1996

ALSTON INC.

Quality . Beauty . Longevity .™

LVT/LVP/SPC/WPC flooring coverings when using a F-Number System. Resilient flooring products should never be installed over expansion joints. Expansion joint covers, designed for use with resilient floorings should be used. Control joints (saw cuts) may be patched and covered with resilient once the concrete is thoroughly cured, dry and acclimated.

**A moisture barrier/mitigator like 6 mil poly film or equal vapor retarder with a perm rating of 0.1 or less is required for a successful installation.*

For Wood Substrates:

Wood subfloors must be structurally sound and in compliance with local building codes.

- a. Sub-floor should be level within 1/8" in 6 feet or 3/16" in 10 feet.
- b. A moisture barrier/mitigator like 6 mil poly film or equal vapor retarder with a perm rating of 0.1 or less is required.
- c. Add a layer of APA underlayment grade ply wood that is dimensionally stable, non-staining, with a smooth fully sanded face to Chip board, OSB, particleboard, construction grade plywood, which are generally not acceptable substrates.
- d. Double-Layered APA rated plywood subfloors should be a minimum 1" total thickness, with at least 18" well-ventilated air space beneath.

TOOLS AND SUPPLIES

Utility knife, Straight edge, tapping block, rubber mallet, spacers, pencil, tape measure, pull bar, ruler, 1/4" spacers, chalk line, safety goggles and hand saw for cutting door frames.

INSTALLATION GENERAL RULES:

- a. Always start installation on a clean, structurally sound and leveled subfloor.
- b. Always test for subfloor moisture.
- c. Always acclimate flooring materials for no less than 72 hours on the jobsite prior to installation.
- d. Installation of flooring should start only after the jobsite has been cleaned and cleared of other trades. However, if other trades are in the work area, a floor protector is highly recommended to help protect the finish of the floor.
- e. Vinyl flooring should NEVER be installed under cabinets or kitchen islands. Doing so will void the manufacture warranty.
- f. Always work from multiple boxes and install using conventional tile and plank installation techniques. Plank products should have a minimum of 6 - 8" seam stagger. For random width plank begin installation with the widest plank first.
- g. Carefully determine where to begin tile or plank installation. It's best to start at the center of the room/hallway so borders are not less than half a tile or plank.
- h. Work lengthwise from one end using a center reference line as a guide in hallways and small spaces. Make sure cut edges are always against the wall.
- i. To properly cut LVT/LVP/SPC/WPC products score the top side of the material with a utility knife. Bend the product and finish the cut through the backside. This will ensure the cleanest cut. It may be necessary to use a heat gun to cut around vertical obstructions. Allow the heated LVT/LVP/SPC/WPC to return to room temperature before installation.
- j. Cutting the product into a fine point may lead to delamination. Use an ethyl cyanoacrylate based super glue to help fuse the LVT/LVP/SPC/WPC point together. Be sure to clean all glue from the top surface immediately. Alcohol based super glues may cause vinyl to swell.
- k. IMPORTANT: Except for SPC and WPC flooring. All other LVT/LVP flooring must be rolled with a minimum 100-lb roller after installation. Use a hand roller in areas not reached with a 100 lb. roller.
- l. Recommended to use floor protection after installation. DO NOT use a plastic adhesive based protection system.

ALSTON INCORPORATED

21491 Ferrero Parkway • City of Industry, CA 91789 • U.S.A. • Tel (909) 287-0668 • www.AlstonFlooring.com
www.AlstonInc.com



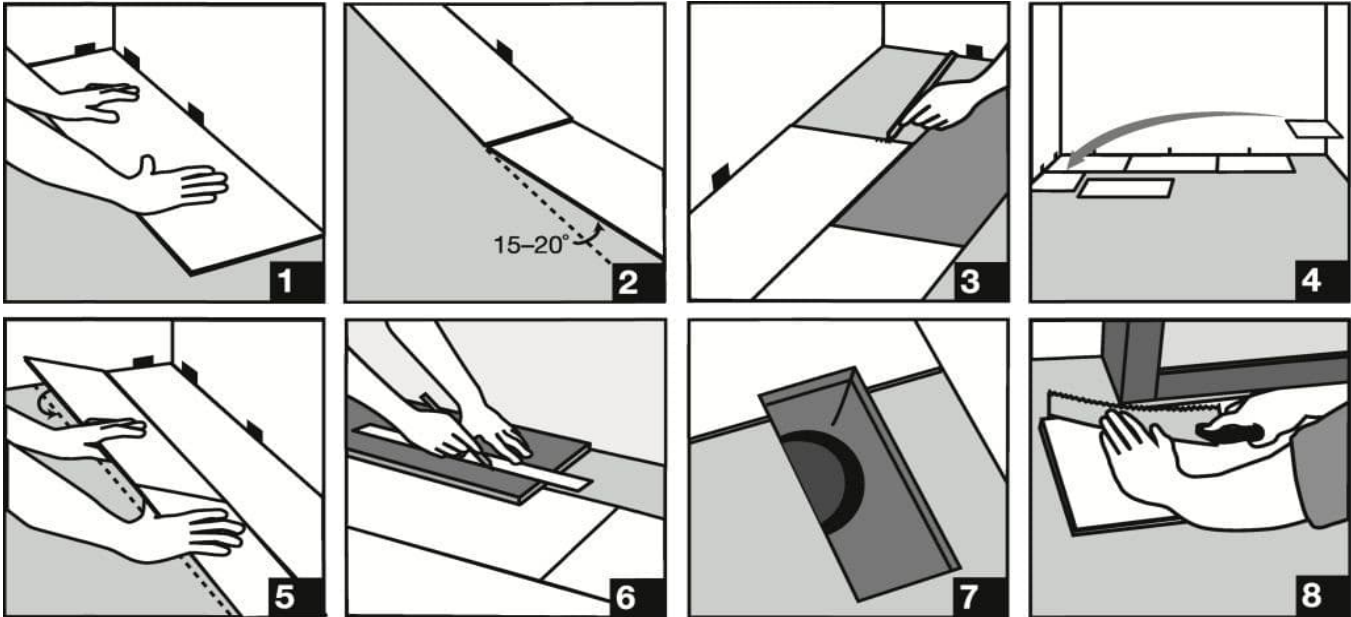
Since 1996

ALSTON INC.

Quality . Beauty . Longevity .™

INSTALLATION FOR LUXURY VINYL PLANKS/SPC/WPC

**Please check for visual defect PRIOR to installation, any plank that has been installed will be deemed acceptable to the owner.*



INSTALLING THE FIRST ROW

Start in a corner by placing the first plank with the tongue side facing the wall. Use spacers along each wall to maintain an expansion space of 8-12 mm (3/8"-1/2") between the wall and the flooring. **Diagram 1.**

NOTE: This spacing must also be maintained between the floor and all vertical surfaces, including cabinets, posts, partitions, doorjambes and door tracks. You will also need to use transition strips in doorways and between rooms. Failure to do so may cause buckling or gapping.

Insert the end tongue of the second plank into the end groove of the first tile at an angle of approx. 15-20 degrees. When lowered the plank will click into place. The planks should be flat to the floor. **Diagram 2.**

WARNING: Failure to properly line up and pull together tight the end joints, attempting to force boards in while out of alignment will result in permanent damage to the board's locking system and are not covered under warranty.

Continue connecting the first row until you reach the last full plank. Fit the last plank by rotating the tile 180° with the pattern side upward, place beside the row. Draw a line across the new plank with a pencil, score with utility knife and snap off. Attach as described above. **Diagram 3.**

It is important to ensure that the planks in the first row are straight before beginning installation of the second row. Use a rubber mallet and tapping block. Be careful not to force the boards while they are out of alignment.

ALSTON INCORPORATED

21491 Ferrero Parkway • City of Industry, CA 91789 • U.S.A. • Tel (909) 287-0668 • www.AlstonFlooring.com
www.AlstonInc.com



Since 1996

ALSTON INC.

Quality . Beauty . Longevity .™

INSTALLING THE SECOND ROW

Begin the second row with the offcut piece from the first row to stagger the pattern. Pieces should be a minimum of 150 mm (6") long. Remember to use spacers along each wall to maintain an expansion space of 8-12 mm (3/8"-1/2") between the wall and the flooring. **Diagram 4.**

NOTE: It is faster to assemble planks into a new row at the ends and then attach the entire row to the previous row on the long sides.

To start your second row, lay your first plank on the subfloor. Take your second plank and insert the end tongue into the end groove of the first plank at an angle of approximately 15-20 degrees. When lowered, the plank will click into place with light pressure. The planks should be flat to the floor. Make sure gaps are as small as possible. Continue assembling the planks this way until you have your second row complete.

To attach the second row to the first row, tilt and push the side tongue into the side groove of the first row at an angle of approx. 15-20 degrees. When lowered, the planks will click into place and be flat to the floor. To ensure a strong seated joint, carefully use a rubber mallet and tapping block to lightly tap into place. Line up edges carefully. Be careful not to force the boards while they are out of alignment. Continue laying remaining rows in this manner. **Diagram 5.**

INSTALLING THE LAST ROW

To fit the last row, start by using the offcut piece from the previous row. Lay the plank on top of the previous row. With the tongue to the wall, use a ruler to draw a cutline. Don't forget to allow room for spacers. Cut the plank and attach into position. **Diagram 6.**

DOOR FRAMES AND HEATING VENTS

Door frames and heating vents also require expansion room. First cut the plank to the correct length. Then place the cut plank next to its actual position and use a ruler to measure the areas to be cut out and mark them. Cut out the marked points allowing the necessary expansion distance on each side. **Diagram 7.**

You can trim door frames by turning a plank upside down and using a handsaw to cut away the necessary height so that the plank slides easily under the frames. **Diagram 8.**

Remove the spacers once the floor is completely installed.

ALSTON INCORPORATED

21491 Ferrero Parkway • City of Industry, CA 91789 • U.S.A. • Tel (909) 287-0668 • www.AlstonFlooring.com
www.AlstonInc.com



Since 1996

ALSTON INC.

*Quality . Beauty . Longevity .*TM

INSTALLATION FOR LUXURY VINYL TILES

To square the area to be covered, first find the center of one end of the main rectangle.

Locate the same point at the other end wall. Snap a chalk line between these points to mark the center line on the floor. Then measure along this center line to find the middle of the room. At the center point, mark off a line across the room

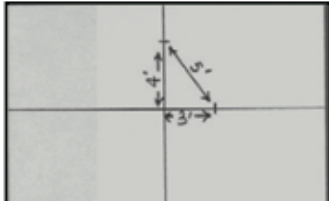


Figure 1

at exactly right angles to the first line. This may be accomplished by the 3-4-5-triangle method as shown in Figure 1. Then measure 4 feet toward each side wall from the center point. Then measure 3 feet from the center point along the longer line, measure exactly 5 feet from the 3 feet mark on the center line to the 4 feet mark on the cross line, if the 5 foot measurements do not come out exactly 5 feet, the center crossing lines are not at a true right angle. For large rooms, multiples of the above dimensions may be used to obtain greater accuracy. (6-8-10 or 9-12-15, etc.)

Dry-lay a row of tiles from the center line to the side wall to determine the space left for the borders. If the resulting border is too small, move the starting point over a half tile width so that it straddles the center line. Repeat the same procedure lengthwise of the room. (This can readily be figured out from the room dimensions without putting down the tiles if desired.)



Figure 2

If it is decided to have the center row of tiles straddle either or both of the center lines, additional guidelines should be snapped on the floor 3/4 tiles width on one side of either or both center lines as required. (See Figure 2)

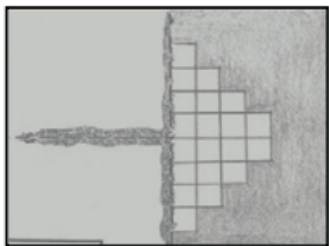


Figure 3

After the border widths have been determined and the center starting lines have been snapped spread the recommended adhesive on the center lines leaving portions of the lines at center and near each wall uncovered as shown in Figure 3. Spread the adhesive over one-half the area and after it is ready, start laying tile from the right angle formed in the center of the room by center lines.

Lay toward the two corners of the room as shown. Always refer to your guide lines as you progress with laying tile so that any mistake can be corrected before it is too late. Sometimes it's necessary to compromise on the rightness of joints to make allowances for unevenness or waves of the subfloor. Take care to place tile as accurately as possible without sliding them into place.

DOOR FRAMES AND HEATING VENTS

Door frames and heating vents also require expansion room. First cut the tile to the correct length. Then place the cut tile next to its actual position and use a ruler to measure the areas to be cut out and mark them. Cut out the marked points allowing the necessary expansion distance on each side.

You can trim door frames by turning a tile upside down and using a handsaw to cut away the necessary height so that the tile slides easily under the frames.

Remove the spacers once the floor is completely installed.

ALSTON INCORPORATED



Since 1996

ALSTON INC.

Quality . Beauty . Longevity .™

CARE AND MATINENANCE FOR LVT/LVP/SPC/WPC

ALSTON Vinyl floors are durable, but like all interior floor coverings require care periodically to look their best and prevent problems before they occur.

- After installation, clean up any remaining or spilled adhesive with a damp cloth. Allow 5 to 7 days before cleaning the floor to allow the perimeter planks to adhere to the sub floor
- Avoid exposure to direct sunlight for prolonged periods of time. Use drapes or blinds to minimize direct sunlight during peak sunlight hours. It is important that floor surface temperature must never exceed 85°F (29°C).
- Water leakage over or around the outer edges of the flooring may damage a wood subfloor, so clean up water right away.
- If an edge or corner of the flooring happens to lift slightly in specific areas, use double sided floor tape to adhere the floor flush to the subfloor.
- Sweep regularly to remove surface grit and dust. Use a damp cloth or mop to clean up any dirt and footprints. Avoid using excessive amounts of moisture, as this may cause bond failure for the adhesive. All spills should be cleaned up immediately
CAUTION: Planks are slippery when wet.
- Never use wax, polish, abrasive cleaners or scouring agents as they may dull or distort the finish.
- High heels can damage floors. Do not allow pets with undipped nails to scratch or damage the floor.
- Use non-staining protective pads under furniture, chairs and tables.
- Use doormats at entrance ways to protect the floor. Avoid using rubber backed rugs, as they may stain or discolor the vinyl flooring.
- If you have an asphalt driveway, use a heavy-duty doormat at your main door, as chemicals in asphalt can cause vinyl flooring to yellow.
- CAUTION: Some types of nails, such as common steel nails, cement coated or some resin-coated nails, may cause a discoloration of the vinyl floor covering. Use only non-staining fasteners with underlayment panels. The procedure of gluing and screwing underlayment panels is not recommended. Solvent-based construction adhesives are known to stain vinyl floor coverings. All responsibility for discoloration problems caused by fastener staining or the use of construction adhesive rests with the underlayment installer/consumer.

It's a good idea to save a few boxes of materials in case of accidental damage. Planks can be replaced or repaired by a flooring professional.

ALSTON INCORPORATED

21491 Ferrero Parkway • City of Industry, CA 91789 • U.S.A. • Tel (909) 287-0668 • www.AlstonFlooring.com
www.AlstonInc.com



Since 1996

ALSTON INC.

Quality . Beauty . Longevity .™

ALSTON Luxury Vinyl Plank and Luxury Vinyl Tile Including StoneCoreX® SPC/WPC Flooring

WARRANTY INFORMATION

PLEASE READ OVER THE ENTIRE INSTRUCTIONS BEFORE PROCEEDING WITH ACTUAL INSTALLATION. IF YOU DO NOT ACCEPT THE TERMS AND CONDITIONS OF THIS WARRANTY, PLEASE DO NOT INSTALL "ALSTON" FLOORING.

(Please check for details on our website www.AlstonFlooring.com for up-to-date information and changes)

Pre-Installation Satisfaction Guarantee

ALSTON has adopted the highest possible manufacturing standards for its premium floors well within the limitations of the natural materials, and, based on the accepted standards in the industry defect tolerances and variances of maximum 5% allowed. These allowances cover either natural defect within the raw-materials themselves, and/or defects that may take place in working specifically with natural materials. Within 30 days of purchase, **PRIOR TO INSTALLATION**, the Installer/Owner should perform a detailed product quality inspection. The User, Installer and Homeowner has the final responsibility pertaining to the inspection and acceptance of quality, grade, workmanship, surface-finish, color, and visual aspects of ALSTON floorings prior to installation. The responsibility is also applicable during his/her/their absence from the location of the installation(s). The installer must also utilize the product selectively and methodically. Floor material must be carefully checked and judged prior to installation; **never install any damaged or visually defective boards**. If for any reason the flooring is not acceptable at the time of final inspection, **please DO NOT install the flooring** and contact the seller or ALSTON immediately and we will exchange the material until you are 100% satisfied. Once any floorboards are installed, even with imperfections, they are deemed as accepted by the User/Installer/Homeowner.

Limited Lifetime Structural Warranty

ALSTON warrants that its vinyl flooring products at the time of their original manufactured condition will be free from manufacturing defects for the lifetime you own the floor. Manufacture defects would include defects in assembly, dimension, grading, lamination, and milling. Furthermore, ALSTON warrants its vinyl flooring products, when properly installed in accordance to our installation instructions, the flooring will not warp, twist or cup, nor delaminate, for the lifetime you own the floor even when subjected to varying humidity, provided that the flooring is not subjected to excessive, extended contact with moisture, water or flood for more than 72 hours per occurrence; and provided that all installation instructions and precautions are adhered to. It should be carefully noted however that vinyl is a natural man-made material which has its limitations. It reacts to climatic changes. In high temperature the vinyl will expand, in low temperatures the vinyl will shrink and contracts. It is the responsibility of the end-user to provide stable temperatures between 25°F – 85°F by the use of a humidifier/dehumidifier (depending on the climatic condition) to get the expected performance of the product. Any deformation and gaps on the flooring caused by the failure to provide the proper measures and the correct ambience is not covered by this Warranty.

SPECIAL NOTE: Temperature variations - excessive heat (49 °C/120 °F) or freezing (0 °C/32 °F and below) - may cause expansion or contraction of the product and therefore, not covered under this warranty. The product should never be exposed to surfaces temperatures above exceed 85°F (29°C).

Limited 30 Years Residential Wear Warranty

ALSTON will warrant under normal residential conditions and uses, and providing that our maintenance guidelines are strictly followed, that our factory finish will not wear through, peel off, or permanently stain from common household stains for 30 years on all LVP/LVT/SPC/WPC flooring products from the date of purchase. In the unlikely event that our finish wears through or peels off on the vinyl flooring, ALSTON will, at our option, either: (1) replace the affected plank(s); (2) refund the purchase price prorated over the remaining years of this limited warranty, for the affected area ONLY. NOTE: Finish wear through is defined as 100% finish removal over at least 3% of the area of the total floor installation. Gloss reduction, dents and/or scratches in the finish and surfaces are not considered surface wear and are not covered under this Warranty.

Limited 10 Years Light Commercial Wear Warranty

ALSTON warrants to the original purchaser that all "ALSTON" brand LVP/LVT/SPC/WPC vinyl flooring, when used under light commercial traffic conditions, follow our maintenance procedures and care instructions, its surface finish will not wear through for TEN (10) years from the original date of installation. Finish wear through is defined as 100% finish removal over at least 5% of the area of the total floor installation, which does not include gloss reduction or surface scratches. Our vinyl flooring can be used in Heavy commercial traffic areas but this 10-year warranty will not apply. (e.g. schools, hospitals, offices, airport terminals, train stations, department store aisles or industrial floors)

Moisture and Bonding Warranty

ALSTON warrants its "ALSTON" brand vinyl flooring products, when properly installed with the 6mil moisture barrier and maintained according to our instructions, will not delaminate, cup, buckle or warp due to normal acceptable Sub-floor moisture. We will repair or replace, at ALSTON's sole discretion, a portion or the whole floor for onetime damages done due to Sub-floor moisture problems. Excessive moisture intrusions such as water leak and/or flood are not covered under this warranty. Mold growth and related issues should be handled by professional and it's not covered under this warranty.

Regarding All Warranty Protections

If in the unlikely event of product non-compliance with the above stated warranties, ALSTON, at its sale discretion, will repair, or replace such portions with the same product or another product of equal value of the original purchase. ALSTON shall not be responsible for any costs associated with the removal or

ALSTON INCORPORATED

21491 Ferrero Parkway • City of Industry, CA 91789 • U.S.A. • Tel (909) 287-0668 • www.AlstonFlooring.com
www.AlstonInc.com



Since 1996

ALSTON INC.

Quality . Beauty . Longevity .™

replacement of any flooring products or with the removal or replacement of cabinets, appliances or any other fixtures or items that may need to be removed and replaced as a result of replacing any flooring products. If we are unable to correct the failure after a reasonable number of attempts, ALSTON will refund the cost of replacement of materials ONLY for the portion of the floor that fails. Labor and other related cost is NOT covered under this warranty. IF YOU DO NOT ACCEPT THE TERMS AND CONDITIONS OF THIS WARRANTY, PLEASE DO NOT INSTALL "ALSTON" FLOORING.

Warranty regarding to Labor Costs

ALSTON provides the following Limited Warranties for residential uses, which extend to the original end-purchaser only (and to no other purchaser or transferee) from the date of purchase of its vinyl floorings when installed in full-compliance to the manufacturer's installation instructions, precautions and maintenance procedures, and utilized within environmental preconditions in which they are expected to perform. ALSTON may reimburse actual label costs in the form of store credit as such on the removal, refinishing or replacement of the vinyl flooring products. No cash/check payment will be issued under any circumstances.

This Warranty DOES NOT cover Purchases over the Internet.

ALSTON sells our products through authorized retailer outlets only. ALSTON will not honor any warranty claims for any products purchased over the Internet, nor will we accept any returns for such products purchased online.

EXCLUSIONS

ALSTON Disclaims liability for incidental or consequential damages, including any implied warranty of merchantability, or warranty of fitness for a particular purpose, with respect to this product. This is the complete and exclusive statement of the warranty, and is in lieu of all other express and/or statutory warranties. Some states do not allow the exclusion of limitation of incidental or consequential damages, so this limitation/exclusion may not apply to you.

Temperature variations - excessive heat (49 °C/120 °F) or below freezing (0 °C/32 °F and below) - may cause expansion or contraction of the product and therefore, not covered under this warranty. In addition, Gapping, shrinkage, squeaks, popping noises from subfloor or structural subfloor related issues are not covered under this warranty. The warranties do not cover damages/failures as result of uneven subfloors. The warranties do not cover scratches or indentations arising from accidents, abuse, misuse, insufficient protection on furniture, heavy objects, and improper maintenance. Dents and scratches or claw marks made by pets, spiked heels, sand, pebbles and other abrasives are considered abuse and are not covered. The warranties do not cover damages caused by negligence, wheel chairs, impact from objects, insects, water saturation/leaks, excessive heat and "green-house" effect. Mold growth and related issues are NOT covered under the warranties. The warranties also do not cover damages caused by natural weather conditions such as but not limited to: fading or color discoloration caused by exposure to heat or sun light, rainfall, tornadoes, floods, erosions, landslides, hurricanes, wind, earthquakes and other natural disasters. Minor color variations in vinyl flooring are also natural occurrence due to run lots and difference in raw materials at different production batches. For these reasons, we cannot guarantee that new and/or replacement flooring will match exactly with the display samples and/or existing installed floors. Spike or stiletto high-heel shoes, especially those in poor repair, may cause denting and related damage to vinyl floors due to the extremely high compressive force they generate, are not covered. The warranties do not cover damages arising from failure to follow ALSTON's maintenance instructions. The warranties do not cover construction-related damages, and installation procedures and/or improper alterations, modifications of the original manufactured products. The warranties do not cover floors with alkalis in the sub-floor or conditions arising from hydrostatic pressure or exterior applications. The warranties do not apply to seconds, off-quality, or "as-is" goods.

CAUTION: Some types of nails, such as common steel nails, cement coated or some resin-coated nails, may cause a discoloration of the vinyl floor covering. Use only non-staining fasteners with underlayment panels. The procedure of gluing and screwing underlayment panels is not recommended. Solvent-based construction adhesives are known to stain vinyl floor coverings. All responsibility for discoloration problems caused by fastener staining or the use of construction adhesive rests with the underlayment installer/consumer.

**This warranty is not transferable, not assignable and it extends only to the original purchaser. ALSTON Flooring material purchased through Internet is NOT covered under this warranty.*

WARRANTY OWNER

This Limited Warranty applies only to the original purchaser and the original installation site and is not transferable and with respect to the residential warranty, applies only to a resident homeowner. Claims under this Limited Warranty must be made in writing by the flooring retailer **within 30 days** of the basis of the claim being detected and fall within the warranty period to the following address:

ALSTON INC.
Warranty and Claims
21491 Ferrero Pkwy
City of Industry, CA 91789
Tel: +1(909)287-0668 Email: Info@AlstonInc.com

ALSTON INCORPORATED

21491 Ferrero Parkway • City of Industry, CA 91789 • U.S.A. • Tel (909) 287-0668 • www.AlstonFlooring.com
www.AlstonInc.com